

MAKE YOUR WORK MORE EFFICIENT



MANY OF YOUR WORK, CAN BE DONE MORE EASILY

ZHEJIANG XINYUAN ELECTRIC APPLIANCE MANUFACTURE CO.,LTD

No.168 North Yingui Road, Chengxi New Area, Yongkang,Zhejiang, China.
Tel:0086- 579 -87254213
Fax:0086-579-87253189
Web:www.sencantools.com
Maintance web:http://61.130.151.130:88
Email:ykxyd@xinyuantools.com

www.sencantools.com

SENCAN®



HIGH PERFORMANCE POWER TOOLS

MANY OF YOUR WORK, CAN BE DONE MORE EASILY

2020 - CATALOGUE



ENTERPRISE INTRODUCTION

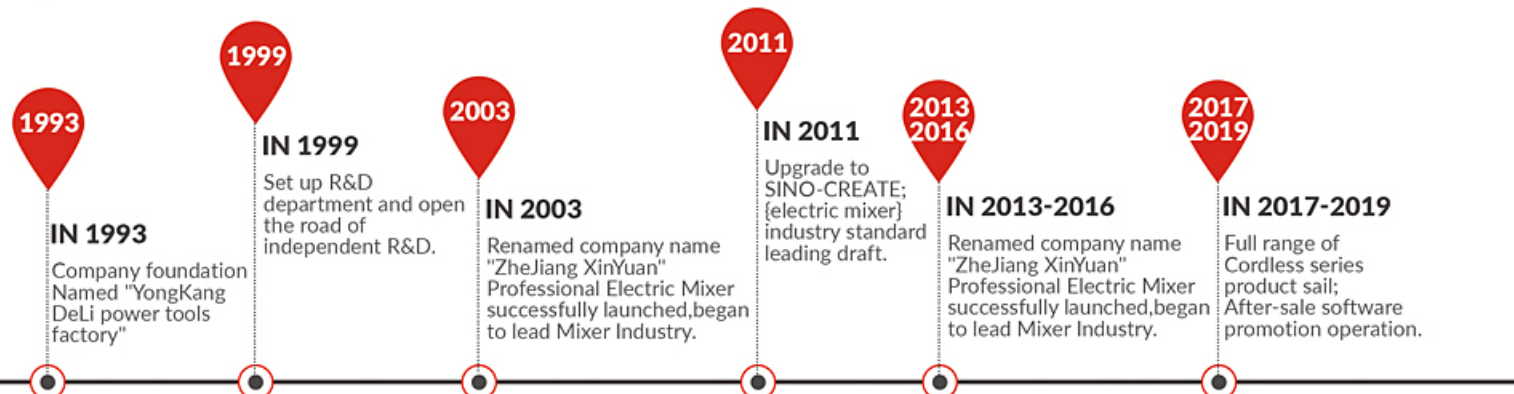


The Company was established in 1993, one of the earliest large modernized professional power tool enterprises integrated with R&D, manufacture and marketing in China. From the beginning of establishment, xinyuan submit the business philosophy "business on faith,harmony for win-win" ,and confirmed the enterprise core "operation on faith, technology as source" .Now we have two production bases with more than 600 employees, and more than 100,000 square meters, annual production capacity of 6 million units. More than 10 products have been certified by CE, GS, EMC and so on, and more than 60 products have awarded national patents.

ENTERPRISE CULTURE

- ▶ THE MOST POWERFUL PROFESSIONAL POWER TOOLS BRAND MANUFACTURER
- ▶ BUSINESS ON FAITH, HARMONY FOR WIN-WIN
- ▶ SINO-CREATE WINS GLOBAL TRUST
- ▶ ACHIEVEMENT ON THE CUSTOMER, BRAND,EMPLOYEEES

DEVELOPMENT HISTORY



INTERNATIONAL SALES NETWORK

20+ YEARS
50+ COUNTRIES

In exploring international market for 20 years, the company is committed to continuous innovation, to meet different market needs, marketing network all over the world, products are exported to more than 50 countries and regions, 90% in the form of independent brands



CORDLESS SERIES

3.6V PLATFORM

LI-ION DRILL DRIVER
LI-ION DIE GRINDER

12V PLATFORM

LI-ION DRILL DRIVER
LI-ION DIE GRINDER
LI-ION SCREWDRIVER

14.4V PLATFORM

LI-ION BRUSHLESS ROTARY HAMMER
LI-ION ROTARY HAMMER
LI-ION IMPACT DRILL
LI-ION DRILL DRIVER
LI-ION RECIPROCATING SAW

18V PLATFORM

LI-ION BRUSHLESS ROTARY HAMMER
LI-ION BRUSHLESS IMPACT WRENCH
LI-ION BRUSHLESS ANGLE GRINDER
LI-ION BLOWER

36V PLATFORM

LI-ION BRUSHLESS ROTARY HAMMER

OTHERS LI-ION

12V LI-ION DRILL DRIVER
12V LI-ION DRILL DRIVER
14V LI-ION DRILL DRIVER
18V LI-ION DRILL DRIVER
18V LI-ION SHEAR

01-06



HAMMER DRILL SERIES

ELECTRIC DRILL
IMPACT DRILL
IMPACT WRENCH
IMPACT SCREWDRIVER

ROTARY HAMMER
DEMOLITION HAMMER
MAGNETIC DRILL

07-16



MIXER SERIES

ELECTRIC MIXER
TWIN-HANDLE ELECTRIC MIXER

17-18



GRINDING SERIES

ANGLE GRINDER
DIE GRINDER
STRAIGHT SANDER

ANGLE POLISHER
WALL GRINDING MACHINE

19-26



WOOD WORKING SERIES

PLUNGE ROUTER
ELECTRIC PLANER
ELECTRIC TRIMMER
FINISHING SANDER

JIG SAW
BELT SANDER
ELECTRIC BLOWER
CIRCULAR SAW

27-32



MEASURING TOOL SERIES

LINE LASER

33



WELDING MACHINE SERIES

WELDING MACHINE

34



OTHERS

MARBLE CUTTER
ELECTRIC SHEAR
CUT-OFF MACHINE
MITER SAW

HEAT GUN
CHAIN SAW
HIGH PRESSURE WASHER

35-36



ACCESSORIES SERIES

TCT SAW BLADE
DIAMOND SAW BLADE

CHISEL
TWIST DRILL BIT

SDS PULS HAMMER DRILL BIT
MASONRY DRILL BIT

37-38

1

2

3

4

5

6

7

8

9



D722801 PRODUCT DETAILS



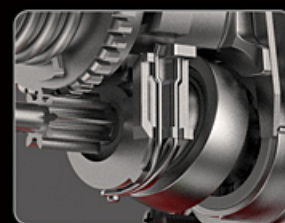
**SAVING 40% ENERGY
BRUSHLESS MOTOR**

- 1 BRUSHLESS MOTOR**
Much higher working efficiency , much longer service life and saving 40% energy compared with brush motor
- 2 LARGE VOLUME CYLINDER**
21mm diameter cylinder,offering much stronger impact force&drilling efficiency
- 3 3 FUNCTIONS**
Drilling,hammer drilling&chiseling
- 4 SDS-PLUS**
Quickly change chuck with SDS
- 5 SAFE CLUTCH**
Automatic tripping when hitting the rebar to ensure user safety
- 6 CYLINDRICAL HEAD SHELL DESIGN**
Good sealing, built-in aluminum alloy bracket, no deformation and oil leakage for long time using
- 7 EXCLUSIVE BATTERY PACK DESIGN**
Cellular battery pack structure design,sturdy&durable. Independent protection for single cell, with protection function against over-voltage, over-current, over-temperature, short-circuit and over-shoot

3 FUNCTIONS



SAFE CLUTCH





PLATFORM SERIES
3.6V

LITHIUM-ION *3.6V MAX CORDLESS PLATFORM SERIES



3.6V
LI JL

D510501
POL-KY-5

LI-ION SCREWDRIVER

Battery Capacity	3.6V/1.5Ah
Chuck Type	6.35mm(1/4" hexagonal)
No-Load Speed	200r/min
Charge Time	180min
Max Torque	4N.m
Machine Weight	0.4Kg



3.6V
LI

D570801
JOJ-KY-0.8

LI-ION SHEAR

Battery Capacity	3.6V/2.0Ah
No-Load Speed	11000/min
Charge Time	240min
Machine Weight	0.3Kg



PLATFORM SERIES
12V

LITHIUM-ION *12V MAX CORDLESS PLATFORM SERIES



NEW
12V
LI JL

D531002
Z0J-KY2-10

LI-ION DRILL DRIVER

Battery Capacity	12V/2.0Ah	Charge Time	60min
Max Drilling Dia	Steel ϕ 10mm	Max Torque	30N.m
	Wood ϕ 25mm	Machine Weight	1.05Kg
No-Load Speed	0-350/0-1400r/min		



NEW
12V
LI

D701001
S0J-KY-10

LI-ION DIE GRINDER

Battery Capacity	12V/2.0Ah
Max Outer Dia	ϕ 3mm
No-Load Speed	5000-30000r/min
Charge Time	90min
Machine Weight	0.65Kg



NEW
12V
LI JL

D511201
POB-KY-12

LI-ION SCREWDRIVER

Battery Capacity	12V/2.0Ah	Impact Rated	0-3000 /min
Capacity Standard Bolt	M4-M14	Charge Time	90min
Chuck Type	6.35mm (1/4" hexagonal)	Max Torque	100N.m
No-Load Speed	0-2400r/min		



PLATFORM SERIES
14.4V

LITHIUM-ION *14.4V MAX CORDLESS PLATFORM SERIES



NEW
BL
14.4V
LI JL

D721602
Z0C-KY2-16

LI-ION BRUSHLESS ROTARY HAMMER

Battery Capacity	14.4V/3.0Ah	Charge Time	60min
Max Drilling Dia	Concrete ϕ 16mm	Impact Energy	2.3J
	Steel ϕ 10mm	Machine Weight	2.1Kg
	Wood ϕ 25mm		
Max Impact Rate	0-5100 /min		
No-Load Speed	0-1000r/min		



14.4V
LI JL

D531001
Z0J-KY-10

LI-ION DRILL DRIVER

Battery Capacity	14.4V/1.5Ah/2.0Ah	Max Torque	40N.m
Max Drilling Dia	Steel ϕ 10mm	Machine Weight	1.1Kg
	Wood ϕ 25mm		58.5*38*26cm
No-Load Speed	0-350/0-1350r/min	G.W./N.W./PCS	17.0/11.0KGS
Charge Time	60min/90min		6PCS/CTN



14.4V
LI JL

D521001
Z0C-KY-10

LI-ION IMPACT DRILL

Battery Capacity	14.4V/1.5Ah/2.0Ah	Max Torque	40N.m
Max Drilling Dia	Steel ϕ 10mm	Machine Weight	1.1Kg
	Wood ϕ 25mm		58.5*38*26cm
Max Impact Rate	0-6750/0-25500/min	G.W./N.W./PCS	17.0/11.0KGS
No-Load Speed	0-350/0-1350r/min		6PCS/CTN
Charge Time	60min/90min		



14.4V
LI

D561501
J0L-KY-10

LI-ION RECIPROCATING SAW

Battery Capacity	14.4V/1.5Ah/2.0Ah	Stroke length	14.5mm
Stroke Rate	0-3300/min	Machine Weight	1.4Kg
Charge Time	60min/90min		
Cutting Capacity	Wood 65mm		
	Steel 8mm		



14.4V
LI JL

D721601
Z0C-KY-16

LI-ION ROTARY HAMMER

Battery Capacity	14.4V/3.0Ah	Charge Time	60min
Max Drilling Dia	Concrete ϕ 16mm	Impact Energy	1.3J
	Steel ϕ 10mm	Machine Weight	2.15Kg
	Wood ϕ 25mm		62*45.5*36.5cm
Max Impact Rate	0-4800/min	G.W./N.W./PCS	38.0/25.0KGS
No-Load Speed	0-1050r/min		5PCS/CTN



LITHIUM-ION *18V MAX CORDLESS PLATFORM SERIES



D541001
SOM-KY-10



BL
18V

LI-ION BRUSHLESS ANGLE GRINDER

Battery Capacity	18V/4.0Ah	Charge Time	60min
Max Disc Dia	φ100mm	Machine Weight	1.9Kg
Spindle Thread	M10	G.W./N.W./PCS	4PCS/CTN
No-Load Speed	0-8500r/min		



D722301
ZOC-KY-23

LI-ION BRUSHLESS ROTARY HAMMER

Battery Capacity	18V/4.0Ah	Charge Time	60min
Max Drilling Dia	Concrete φ23mm	Impact Energy	2.5J
	Steel φ13mm	Machine Weight	3.2Kg
	Wood φ30mm		53.5*37.5*35cm
Max Impact Rate	0-4800/min	G.W./N.W./PCS	26.0/18.0KGS
No-Load Speed	0-1100r/min		3PCS/CTN



D512001
POB-KY-20

LI-ION BRUSHLESS IMPACT WRENCH

Battery Capacity	18v/4.0Ah	Machine Weight	1.9Kg (with battery)
Square Drive Anvil	1/2" (φ12.7mm)		1.25Kg (without battery)
Max Torque	330N.M		
Capacity High Tensile Bolt	M6-M20		
Max Impact Rate	0-3300/min		56*40*30.1cm
No-Load Speed	0-3000r/min	G.W./N.W./PCS	29.0/25.0KGS
Charge Time	120min		5PCS/CTN



D772601
QIF-KY-2.6

LI-ION BLOWER

Battery Capacity	18V	Machine Weight	1.9Kg
Wind Volume	2.6m³/min		
No-Load Speed	0-18000r/min		
Charge Time	60min		



LITHIUM-ION *36V MAX CORDLESS PLATFORM SERIES



D722801
ZOC-KY-28

LI-ION BRUSHLESS ROTARY HAMMER

Battery Capacity	36V/2.0Ah	Charge Time	45min
Max Drilling Dia	Concrete φ28mm	Impact Energy	3J
	Steel φ13mm	Machine Weight	3.55Kg
	Wood φ30mm		53.5*37.5*35cm
Max Impact Rate	0-4800/min	G.W./N.W./PCS	26.0/18.0KGS
No-Load Speed	0-1100r/min		3PCS/CTN



D571501

18V LI-ION SHEAR

Battery Capacity	18V/1.5Ah	Machine Weight	1.2Kg
No-Load Speed	0-400/0-1500/min	Charge Time	90min
Max Cutting Capacity	Iron Sheet 0.8mm		
	Wirecloth 1.5mm		
	Cloth/Carpet/Leather 5mm		
	Plastic Plates 2mm		



D511210

12V LI-ION DRILL DRIVER

Battery Capacity	12V/1.5Ah	Max Torque	34N.m
Max Drilling Dia	Steel φ10mm	Machine Weight	0.95Kg
	Wood φ25mm		54.5*36*25cm
No-Load Speed	0-350/0-1350r/min	G.W./N.W./PCS	15.6/6.0KGS
Charge Time	60min		6PCS/CTN



D511206

12V LI-ION DRILL DRIVER

Battery Capacity	12V/1.5Ah	Machine Weight	1.05Kg
Max Drilling Dia	Steel φ10mm		54.5*36*25cm
	Wood φ25mm	G.W./N.W./PCS	16.5/6.0KGS
No-Load Speed	0-350/0-1350r/min		6PCS/CTN
Charge Time	90min		
Max Torque	34N.m		



D511406

14.4V LI-ION DRILL DRIVER

Battery Capacity	14.4V/1.5Ah	Machine Weight	1.1Kg
Max Drilling Dia	Steel φ10mm		54.5*36*25cm
	Wood φ25mm	G.W./N.W./PCS	15.6/6.0KGS
No-Load Speed	0-350/0-1350r/min		6PCS/CTN
Charge Time	90min		
Max Torque	36N.m		



D511806

18V LI-ION DRILL DRIVER

Battery Capacity	18V/1.5Ah	Machine Weight	1.15Kg
Max Drilling Dia	Steel φ10mm		54.5*36*25cm
	Wood φ30mm	G.W./N.W./PCS	17.0/7.0KGS
No-Load Speed	0-350/0-1350r/min		6PCS/CTN
Charge Time	90min		
Max Torque	40N.m		



531033 PRODUCT DETAILS



EFFICIENT VENTILATION COOLING DESIGN

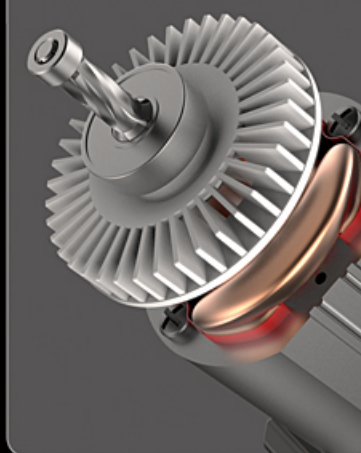
- 1 HIGH POWER MOTOR & HIGH SPEED DESIGN**
900W high-power motor with speed up to 4000r / min, suitable for high load and high efficiency operation
- 2 HEAD SHELL HEAT INSULATION SLEEVE DESIGN**
Effective heat insulation to ensure user safety
- 3 STEPLESS SPEED CONTROL&DUSTPROOF SWITCH DESIGN**
Switch stepless speed adjustment, suitable for different working scenarios; dustproof design effectively increases the service life of the switch
- 4 AUXILIARY HANDLE DESIGN**
Two-way auxiliary handle installation design, users can install auxiliary handle according to the use scene and habits
- 5 BELT BUCKLE DESIGN**
Equipped with detachable belt buckle, which can be installed on both sides of the fuselage, users can choose to install according to the usage habits
- 6 EFFICIENT VENTILATION AND COOLING DESIGN**
Surrounding wind duct design with effective heat dissipation to ensure the service life of the machine
- 7 SOFT LEATHER WRAP**
More comfortable grip
- 8 UNIQUE AND EXQUISITE APPEARANCE**
High appearance recognition, unique and exquisite

BELT BUCKLE DESIGN



EFFICIENT HEAT DISSIPATION

EFFICIENT VENTILATION AND COOLING DESIGN



SELLING POINT DIAGRAM

HEAD SHELL HEAT INSULATION SLEEVE DESIGN



STEPLESS SPEED CONTROL & DUSTPROOF SWITCH DESIGN





AS ONE OF THE LEADERS IN ELECTRIC DRILL INDUSTRY IN CHINA

- SENCAN supply the right tools for drilling or screw driving which will help people complete the work in better way.
- Our high power drill machine can drive the self-tapping screws into a metal sheet because of the double reduction gear system and higher speed
- Our rotary hammer working efficiency is 20% higher than competitors.
- The stronger impact force and higher torque help people finish work more easy.
- SENCAN, enjoy the efficiency!



531027
J1Z-KY27-10

500W

10mm ELECTRIC DRILL

Max Drilling Dia	Steel ϕ 10mm Wood ϕ 25mm	G.W./N.W./PCS	20.0/16.5KGS 10PCS/CTN
Rated Input Power	500W	Rated Frequency	60/50Hz
No-Load Speed	0~3500r/min	Rated Voltage	110V/240V
Machine Weight	1.4Kg		
	57*40.5*25cm		



531029
J1Z-KY29-10

10mm

450W

10mm ELECTRIC DRILL

Max Drilling Dia	Steel ϕ 10mm Wood ϕ 25mm	G.W./N.W./PCS	18.3/14.0KGS 10PCS/CTN
Rated Input Power	450W	Rated Frequency	60/50Hz
No-Load Speed	0~1850r/min	Rated Voltage	110V/240V
Machine Weight	1.3Kg		
	57*38.5*23.5cm		



531033
J1Z-KY33-10

NEW

900W

10mm ELECTRIC DRILL

Max Drilling Dia	Steel ϕ 10mm Wood ϕ 32mm	PCS/CTN	10PCS/CTN
Rated Input Power	900W	Rated Frequency	60/50Hz
No-Load Speed	0~4000r/min	Rated Voltage	110V/240V
Machine Weight	2.2Kg		



531011
J1Z-KY11-10C

500W

10mm ELECTRIC DRILL

Max Drilling Dia	Steel ϕ 10mm Wood ϕ 25mm	G.W./N.W./PCS	22.0/17.5KGS 10PCS/CTN
Rated Input Power	500W	Rated Frequency	60/50Hz
No-Load Speed	0~2000r/min	Rated Voltage	110V/240V
Machine Weight	1.52Kg		
	62*45*27.5cm		



531306
J1ZE-KY6-13

710W

13mm ELECTRIC DRILL

Max Drilling Dia	Steel ϕ 13mm Wood ϕ 32mm	G.W./N.W./PCS	26.8/23.0KGS 10PCS/CTN
Rated Input Power	710W	Rated Frequency	60/50Hz
No-Load Speed	0~1100r/min	Rated Voltage	110V/240V
Machine Weight	2.0Kg		
	62*45*27cm		



531603
J1Z-KY-16A

16mm

700W

16mm ELECTRIC DRILL

Max Drilling Dia	Steel ϕ 16mm Wood ϕ 32mm	G.W./N.W./PCS	26.0/23.0KGS 5PCS/CTN
Rated Input Power	700W	Rated Frequency	60/50Hz
No-Load Speed	750r/min	Rated Voltage	110V/240V
Machine Weight	4.05Kg		
	67*37*32cm		



530603
J1Z-KY3-6

6mm

230W

6mm ELECTRIC DRILL

Max Drilling Dia	Steel ϕ 6mm Wood ϕ 9mm	G.W./N.W./PCS	16.6/13.0KGS 10PCS/CTN
Rated Input Power	230W	Rated Frequency	60/50Hz
No-Load Speed	0~3500r/min	Rated Voltage	110V/240V
Machine Weight	1.1Kg		
	51.5*39*23cm		



531031
J1Z-KY31-10

NEW

710W

10mm ELECTRIC DRILL

Max Drilling Dia	Steel ϕ 10mm Wood ϕ 32mm	PCS/CTN	10PCS/CTN
Rated Input Power	710W	Rated Frequency	60/50Hz
No-Load Speed	0~4000r/min	Rated Voltage	110V/240V
Machine Weight	1.6Kg		



531015
J1ZE-KY15-10

710W

10mm ELECTRIC DRILL

Max Drilling Dia	Steel ϕ 10mm Wood ϕ 25mm	G.W./N.W./PCS	25.4/20.0KGS 10PCS/CTN
Rated Input Power	710W	Rated Frequency	60/50Hz
No-Load Speed	0~2800r/min	Rated Voltage	110V/240V
Machine Weight	1.9Kg		
	61*45.5*26.5cm		



532301
J1Z-KY-23

23mm

1150W

23mm ELECTRIC DRILL

Max Drilling Dia	Steel ϕ 23mm Wood ϕ 35mm	G.W./N.W./PCS	32.6/26.0KGS 5PCS/CTN
Rated Input Power	1150W	Rated Frequency	60/50Hz
No-Load Speed	680r/min	Rated Voltage	110V/240V
Machine Weight	5.25Kg		
	70*37*32cm		



**MECHANICAL
2 SPEEDS GEAR**

CHARACTERISTICS

- Double reduction structure to get lower speed and higher torque for heavy-duty work
- 360°rotation side handle with depth stop rod
- Alu. metal gear housing offer higher strength and longer lifetime
- Ergonomical design, rubber overmoulded for a seure hold and prolonged fatigue-free working
- Mechanical 2-speed gear provides optimal working speed



521602
Z1J-KY2-16

16mm IMPACT DRILL

Max Drilling Dia	Concrete ϕ 16mm	Machine Weight	3.4Kg
	Steel ϕ 13mm		70.5*46.5*37cm
	Wood ϕ 35mm	G.W./N.W./PCS	28.5/17.0KGS
Rated Input Power	1050W		5PCS/CTN
No-Load Speed	0~1100/0-3000r/min	Rated Frequency	60/50Hz
Max Impact Rate	0-16000/0-48000/min	Rated Voltage	110V/240V



521309
Z1J-KY9-13

13mm IMPACT DRILL

Max Drilling Dia	Concrete ϕ 13mm	Machine Weight	2.05Kg
	Steel ϕ 10mm		59*42*29.5cm
	Wood ϕ 18mm	G.W./N.W./PCS	26.0/23.0KGS
Rated Input Power	500W		10PCS/CTN
No-Load Speed	0~2900r/min	Rated Frequency	60/50Hz
Max Impact Rate	0-46400/min	Rated Voltage	110V/240V



521311
Z1JE-KY11-13

13mm IMPACT DRILL

Max Drilling Dia	Concrete ϕ 13mm	Machine Weight	2.15Kg
	Steel ϕ 10mm		62*42.5*27cm
	Wood ϕ 25mm	G.W./N.W./PCS	28.7/20.0KGS
Rated Input Power	710W		10PCS/CTN
No-Load Speed	0~3000r/min	Rated Frequency	60/50Hz
Max Impact Rate	0-48000/min	Rated Voltage	110V/240V



521305
Z1J-KY5-13

13mm IMPACT DRILL

Max Drilling Dia	Concrete ϕ 20mm	Machine Weight	2.5Kg
	Steel ϕ 13mm		55.5*42.5*32.5cm
	Wood ϕ 25mm	G.W./N.W./PCS	22.0/11.7KGS
Rated Input Power	710W		5PCS/CTN
No-Load Speed	0~1300/0-2900r/min	Rated Frequency	60/50Hz
Max Impact Rate	0-19200/0-46400/min	Rated Voltage	110V/240V



511602
P1B-KY2-16

M5-M16 IMPACT WRENCH

Capacity Standard Bolt	M5-M16	Square Drive Anvil	1/4"(6.35mm)
Capacity High Tensile Bolt	M5-M12	Machine Weight	1.2Kg
Torque In Forward&Reverse	100N.M		50*38*25cm
Rated Input Power	180W	G.W./N.W./PCS	17.5/14.5KGS
No-Load Speed	0-2500r/min		10PCS/CTN
Impact Rate	0-3000/min	Rated Frequency	60/50Hz
		Rated Voltage	110V/240V



510602
P1L-KY2-6

6.35mm IMPACT SCREWDRIVER

Size Scope	6.35mm(Hexagonal)	Machine Weight	1.55Kg
Wall Screw	6mm		46.5*36.5*33.5cm
Steel Screw	5mm	G.W./N.W./PCS	15.4/10.7KGS
Rated Input Power	500W		5PCS/CTN
No-Load Speed	0-2000r/min	Rated Frequency	60/50Hz
		Rated Voltage	110V/240V



510603
P1L-KY3-6

6.35mm IMPACT SCREWDRIVER

Size Scope	6.35mm(Hexagonal)	Machine Weight	1.5Kg
Wall Screw	6mm		59*42*24.5cm
Steel Screw	5mm	G.W./N.W./PCS	21.5/17.0KGS
Rated Input Power	500W		10PCS/CTN
No-Load Speed	0-2500r/min	Rated Frequency	60/50Hz
		Rated Voltage	110V/240V



CHARACTERISTICS

- Many construction workers worry the lifetime of the hammer which is high efficiency
- Sencan hammers do ensure the quality of the vulnerable parts inside of the gear box so that it can keep balance with the powerful motor
- With higher speed and durability ,sencan hammers will make the workers enjoy efficient work
- Up to 900w and higher speed increasing the performance of work
- Three functions:Drilling,hammer drilling&chiseling
- Bigger motor providing higher power 3.2J
- Postive and negative rotation function for screwdriver operating and thread cutting
- SDS bit lock system



SAFETY CLUTCH TECHNOLOGY



722805
Z1C-KY5-28

HEAVY DUTY

900W

SDS-PLUS

28mm ROTARY HAMMER

Max Drilling Dia	Concrete ϕ 28mm	Machine Weight	3.3Kg
	Steel ϕ 13mm		65*47*27cm
	Wood ϕ 30mm	G.W./N.W./PCS	30.0/18.0KGS
Rated Input Power	900W		5PCS/CTN
No-Load Speed	0~1100r/min	Rated Frequency	60/50Hz
Max Impact Rate	0-4900/min	Rated Voltage	110V/240V

722302
Z1C-KY2-23

620W

SDS-PLUS

23mm ROTARY HAMMER

Max Drilling Dia	Concrete ϕ 23mm	Machine Weight	2.4Kg
	Steel ϕ 13mm		59.5*42*31.5cm
	Wood ϕ 30mm	G.W./N.W./PCS	17/7.0KGS
Rated Input Power	620W		5PCS/CTN
No-Load Speed	0~1100r/min	Rated Frequency	60/50Hz
Max Impact Rate	0-3900/min	Rated Voltage	110V/240V

722403
Z1C-KY3-24

720W

SDS-PLUS

24mm ROTARY HAMMER

Max Drilling Dia	Concrete ϕ 24mm	Machine Weight	3.15Kg
	Steel ϕ 13mm		70.5*46.5*37cm
	Wood ϕ 30mm	G.W./N.W./PCS	29.5/16.5KGS
Rated Input Power	720W		5PCS/CTN
No-Load Speed	0~1100r/min	Rated Frequency	60/50Hz
Max Impact Rate	0-4800/min	Rated Voltage	110V/240V

722615
Z1C-KY15-26

HEAVY DUTY

850W

SDS-PLUS

SELF-LOCKING CLAMP

26mm ROTARY HAMMER

Max Drilling Dia	Concrete ϕ 26mm	Machine Weight	2.95Kg
	Steel ϕ 13mm		62.5*44*35.5cm
	Wood ϕ 30mm	G.W./N.W./PCS	31.3/16.8KGS
Rated Input Power	850W		5PCS/CTN
No-Load Speed	0~1100r/min	Rated Frequency	60/50Hz
Max Impact Rate	0-4800/min	Rated Voltage	110V/240V

722609S
Z1C-KY9-26S

HEAVY DUTY

820W

SDS-PLUS

26mm 2-FUNCTION ROTARY HAMMER

Max Drilling Dia	Concrete ϕ 26mm	G.W./N.W./PCS	26.0/19.5KGS
Rated Input Power	820W		3PCS/CTN
No-Load Speed	900r/min	Rated Frequency	60/50Hz
Max Impact Rate	4900/min	Rated Voltage	110V/240V
Machine Weight	5.0Kg		
	48*46*39cm		

722618S
Z1C-KY18-26S

NEW

800W

SDS-PLUS

26mm 2-FUNCTION ROTARY HAMMER

Max Drilling Dia	Concrete ϕ 26mm	G.W./N.W./PCS	31.3/15.8KGS
Rated Input Power	800W		3PCS/CTN
No-Load Speed	850r/min	Rated Frequency	60/50Hz
Max Impact Rate	5000/min	Rated Voltage	110V/240V
Machine Weight	4.95Kg		
	47.5*43*35.5cm		

723801
Z1C-KY-38

HEAVY DUTY

800W

SDS-PLUS

38MM 2-FUNCTION ROTARY HAMMER

Max Drilling Dia	Concrete ϕ 38mm	G.W./N.W./PCS	22.0/15.0KGS
Rated Input Power	800W		2PCS/CTN
No-Load Speed	400r/min	Rated Frequency	60/50Hz
Max Impact Rate	3000/min	Rated Voltage	110V/240V
Machine Weight	7.08Kg		
	51*28*35cm		



HEAVY DUTY

723007
Z1G-KY7-30

1100W

30 DEMOLITION HAMMER

Rated Input Power	1100W	G.W./N.W./PCS	22.0/17.0KGS
Max Impact Rate	2900/min		2PCS/CTN
Machine Weight	6.55Kg	Rated Frequency	60/50Hz
	53*26.5*34.5cm	Rated Voltage	110V/240V



HEAVY DUTY

726503
Z1G-KY3-65

1700W

65 DEMOLITION HAMMER

Rated Input Power	1700W	G.W./N.W./PCS	20.7/14.0KGS
Max Impact Rate	1800/min		1PC/CTN
Machine Weight	13.6Kg	Rated Frequency	60/50Hz
	71*16.5*30cm	Rated Voltage	110V/240V



HEAVY DUTY

728501
Z1G-KY-85

2000W

85 DEMOLITION HAMMER

Rated Input Power	2000W	G.W./N.W./PCS	21.7/15.0KGS
Max Impact Rate	1600/min		1PC/CTN
Machine Weight	14.75Kg	Rated Frequency	60/50Hz
	71*16.5*30cm	Rated Voltage	110V/240V



HEAVY DUTY

532501
J1C-KY-25

25 MAGNETIC DRILL

Rated Input Power	1500W	Machine Weight	20.3Kg
No-Load Speed	650r/min		
Max Drilling Dia	φ25mm	Rated Frequency	60/50Hz
Electromagnet Suction	13000N	Rated Voltage	110V/240V
Max Stroke	180mm		
Morse Adapter	MT2		



HEAVY DUTY

533001
J1C-KY-30

30 MAGNETIC DRILL

Rated Input Power	1600W	Machine Weight	20.2Kg
No-Load Speed	650r/min		
Max Drilling Dia	φ30mm	Rated Frequency	60/50Hz
Electromagnet Suction	14000N	Rated Voltage	110V/240V
Max Stroke	180mm		
Morse Adapter	MT3		



HEAVY DUTY

533201
J1C-KY-32

32 MAGNETIC DRILL

Rated Input Power	1600W	Machine Weight	24.7Kg
No-Load Speed	100-600r/min		
Max Drilling Dia	φ32mm	Rated Frequency	60/50Hz
Electromagnet Suction	18000N	Rated Voltage	110V/240V
Max Stroke	190mm		



MAGNETIC TAPPING & DRILLING MACHINE

- CHARACTERISTICS**
- Powerful motor and low speed help people finish work in precisely.
 - Automatic cooling system ensure drill, motor and gear longer service life.
 - High-strength material guide offer better abrasion resistance
 - Simple and clear operation panel
 - Strong suction magnetic seat to ensure work safety

ENGINEERING FORCIBLE ENTRY

- CHARACTERISTICS**
- Powerful motor design with higher impact rate make the work high efficiency
 - Ergonomical handle with soft grip for comfortable use
 - Aluminum cylinder for durable work
 - Accepts bits:3/4 Hex steel.



ONLY THE MOST PROFESSIONAL SITUATION REFLECTS ITS UTILITY

CHARACTERISTICS

- Double handle for operation easier
- Infinitely variable speed for power transmission without splashing
- Triple reduction gears to get lower speed and higher torque



581001
Z1V-KY-100

⚡
850W



850W ELECTRIC MIXER

Rated Input Power	850W	G.W./N.W./PCS	20.6/13.2KGS
No-Load Speed	450r/min		4PCS/CTN
Machine Weight	3.78Kg	Rated Frequency	60/50Hz
	63*32*52.5cm	Rated Voltage	110V/240V



581403
Z1V-KY3-140

⚡
1050W



1050W ELECTRIC MIXER

Rated Input Power	1050W	G.W./N.W./PCS	27.3/17.5KGS
No-Load Speed	260~650r/min		4PCS/CTN
Machine Weight	4.3Kg	Rated Frequency	60/50Hz
	61*48*51cm	Rated Voltage	110V/240V



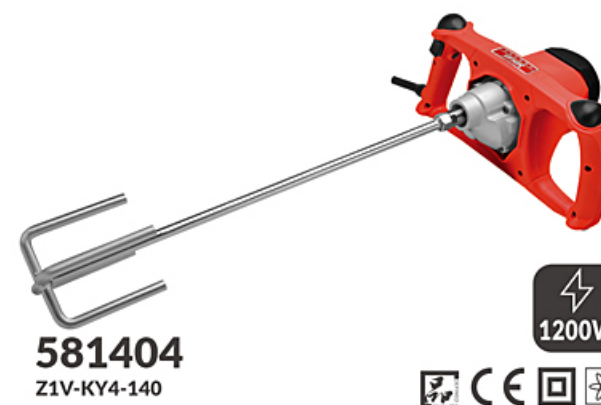
581201
Z1V-KY-120

⚡
950W



950W ELECTRIC MIXER

Rated Input Power	950W	G.W./N.W./PCS	15.8/14.0KGS
No-Load Speed	650r/min		3PCS/CTN
Machine Weight	3.75Kg	Rated Frequency	60/50Hz
	62*27.5*57cm	Rated Voltage	110V/240V



581404
Z1V-KY4-140

⚡
1200W



1200W ELECTRIC MIXER

Rated Input Power	1200W	G.W./N.W./PCS	18.8/15.0KGS
No-Load Speed	260-550r/min		3PCS/CTN
Machine Weight	3.35Kg	Rated Frequency	60/50Hz
	62.5*26.5*58cm	Rated Voltage	110V/240V



581301
Z1V-KY-130X2

⚡
1300W



1300W ELECTRIC MIXER

Rated Input Power	1300W	G.W./N.W./PCS	2PCS/CTN
No-Load Speed	260-550r/min	Rated Frequency	60/50Hz
Machine Weight	6.2Kg	Rated Voltage	110V/240V
	63*32*52.5cm		



581601
Z1V-KY-160

HEAVY DUTY

⚡
1600W



1600W ELECTRIC MIXER

Rated Input Power	1600W	G.W./N.W./PCS	24.0/22.0KGS
No-Load Speed	400/650r/min		3PCS/CTN
Machine Weight	7.1Kg	Rated Frequency	60/50Hz
	56*51*35cm	Rated Voltage	110V/240V



581801
Z1V-KY-180

HEAVY DUTY

⚡
1400W



1400W ELECTRIC MIXER

Rated Input Power	1400W	G.W./N.W./PCS	28.7/16.5KGS
No-Load Speed	550/750r/min		3PCS/CTN
Machine Weight	6.44Kg	Rated Frequency	60/50Hz
	65*38*54cm	Rated Voltage	110V/240V

COLOR:BLACK/SILVERY WHITE

- D01 D03 D04 : Suitable in the low viscosity fluid system,different impeller parameter and combination available for the solid,fluid and aerosol.
- D02: Has the high pump over function,uses in the low viscosity fluid the mix,the circulation and so on.
- D05 D06 : Provides the high shear action,is suitable in the low viscosity fluid.
- D07 D08 : Suitable in medium viscosity processes and so on fluid disperser, mix, heat transfer.



D01 D02 D03 D04 D05 D06 D07 D08



541807/542307
PRODUCT DETAILS



LIMIT POWER UP TO 4500W

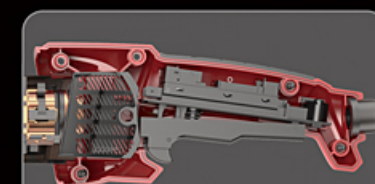
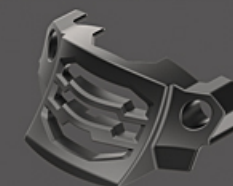
- 1 SUPER HIGH POWER MOTOR**
Actual power 3000W, limit power up to 4500W
- 2 MULTIPLE DUST-PROOF DESIGN**
Air inlet filter design & labyrinth dust-proof design
- 3 360° COOLING DUCT SURROUND DESIGN**
Better ventilation and effective heat dissipation
- 4 HEAD SHELL WATERPROOF DESIGN**
Head shell waterproof design, water cutting without worry
- 5 UNIQUE SWITCH DESIGN**
Prevent misoperation and ensure user safety
- 6 SOFT LEATHER WRAP**
More comfortable operation and reduce user fatigue
- 7 MULTI-DIRECTIONAL HANDLE MOUNTING DESIGN**
Users can install the handle position according to the operating scene and habits

SELLING POINT DIAGRAM

UNIQUE SWITCH DESIGN



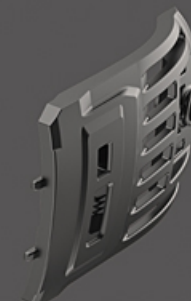
360° COOLING DUCT SURROUND DESIGN



**MULTIPLE
DUST-PROOF**

MULTIPLE DUST-PROOF DESIGN

Air inlet filter design & labyrinth dust-proof design



**HEAVY
DUTY**





541033
S1M-KY33-100

⚡
720W



100mm ANGLE GRINDER

Max Disc Dia	100mm/115mm	G.W./N.W./PCS	26.8/24.0KGS
Rated Input Power	720W		10PCS/CTN
Spindle Thread	M10/M14	Rated Frequency	60/50Hz
No-load Speed	11000r/min	Rated Voltage	110V/240V
Machine Weight	2.0Kg		
	67.5*43*24.5cm		



541050
S1M-KY50-100

NEW

⚡
750W



100mm ANGLE GRINDER

Max Disc Dia	100mm/115mm	PCS/CTN	10PCS/CTN
Rated Input Power	750W		
Spindle Thread	M10/M14	Rated Frequency	60/50Hz
No-load Speed	12000r/min	Rated Voltage	110V/240V
Machine Weight	1.7Kg		



541202
S1M-KY2-125B

⚡
1100W



100mm ANGLE GRINDER

Max Disc Dia	φ100/125mm	G.W./N.W./PCS	34.7/26.0KGS
Rated Input Power	1100W		10PCS/CTN
Spindle Thread	M10/M14	Rated Frequency	60/50Hz
No-load Speed	10000r/min	Rated Voltage	110V/240V
Machine Weight	2.4Kg		
	75*43.5*27cm		



541021
S1M-KY21-100

⚡
720W



100mm ANGLE GRINDER

Max Disc Dia	φ100/115mm	G.W./N.W./PCS	25.3/20.0KGS
Rated Input Power	720W		10PCS/CTN
Spindle Thread	M10/M14	Rated Frequency	60/50Hz
No-load Speed	11000r/min	Rated Voltage	110V/240V
Machine Weight	1.8Kg		
	69*33*24cm		



541034
S1M-KY34-100

⚡
720W



100mm ANGLE GRINDER

Max Disc Dia	100mm/115mm	G.W./N.W./PCS	26.0/19.5KGS
Rated Input Power	720W		10PCS/CTN
Spindle Thread	M10/M14	Rated Frequency	60/50Hz
No-load Speed	11000r/min	Rated Voltage	110V/240V
Machine Weight	1.85Kg		
	69*34*24cm		



541032S
S1M-KY32-100S

NEW

⚡
850W



100MM ANGLE GRINDER

Max Disc Dia	100mm/115mm	PCS/CTN	11PCS/CTN
Rated Input Power	850W		
Spindle Thread	M10/M14	Rated Frequency	60/50Hz
No-load Speed	12000r/min	Rated Voltage	110V/240V
Machine Weight	1.8Kg		



541204
541503
S1M-KY4-125/S1M-KY3-150

⚡
1300W



125mm/150mm ANGLE GRINDER

Max Disc Dia	φ125mm/150mm	G.W./N.W./PCS	17.5/15.4KGS
Rated Input Power	1300W		4PCS/CTN
Spindle Thread	M14	Rated Frequency	60/50Hz
No-load Speed	9000r/min	Rated Voltage	110V/240V
Machine Weight	3.9Kg		
	51.5*30.5*30cm		



541032
S1M-KY32-100

⚡
720W



100mm ANGLE GRINDER

Max Disc Dia	φ100/115mm	G.W./N.W./PCS	26.0/19.5KGS
Rated Input Power	720W		10PCS/CTN
Spindle Thread	M10/M14	Rated Frequency	60/50Hz
No-load Speed	11000r/min	Rated Voltage	110V/240V
Machine Weight	1.8Kg		
	69*33*24cm		



541039
S1M-KY39-100

⚡
720W



100mm ANGLE GRINDER

Max Disc Dia	100mm/115mm	G.W./N.W./PCS	28.2/23.0KGS
Rated Input Power	720W		10PCS/CTN
Spindle Thread	M10/M14	Rated Frequency	60/50Hz
No-load Speed	10000r/min	Rated Voltage	110V/240V
Machine Weight	2.15Kg		
	68*41.5*24.5cm		



541042
S1M-KY42-100

HEAVY DUTY

⚡
850W



100mm ANGLE GRINDER

Max Disc Dia	φ100/115mm	G.W./N.W./PCS	25.0/19.0KGS
Rated Input Power	850W		10PCS/CTN
Spindle Thread	M10/M14	Rated Frequency	60/50Hz
No-load Speed	11500r/min	Rated Voltage	110V/240V
Machine Weight	1.9Kg		
	69*33*24cm		



541206
541506
S1M-KY6-125/150

⚡
1300W



125mm/150mm ANGLE GRINDER

Max Disc Dia	φ125mm/150mm	G.W./N.W./PCS	17.0/15.0KGS
Rated Input Power	1300W		4PCS/CTN
Spindle Thread	M14	Rated Frequency	60/50Hz
No-load Speed	9000r/min	Rated Voltage	110V/240V
Machine Weight	3.2Kg		
	49*30.5*30cm		



HEAVY DUTY ANGLE GRINDER



541207
541507

S1M-KY7-125/150



125mm/150mm ANGLE GRINDER

Max Disc Dia	φ125mm/150mm	G.W./N.W./PCS	18.0/17.3KGS
Rated Input Power	1500W		4PCS/CTN
Spindle Thread	M14	Rated Frequency	60/50Hz
No-load Speed	9200r/min	Rated Voltage	110V/240V
Machine Weight	3.3Kg		
	48.5*34*23cm		



541509
541809

S1M-KY9-150/180



150mm/180mm ANGLE GRINDER

Max Disc Dia	φ150/180mm	PCS/CTN	4PCS/CTN
Rated Input Power	2000W		
Spindle Thread	M14	Rated Frequency	60/50Hz
No-load Speed	8500r/min	Rated Voltage	110V/240V
Machine Weight	4.1Kg		



541801
542301

S1M-KY-180/230



180mm/230mm ANGLE GRINDER

Max Disc Dia	φ180/230mm	G.W./N.W./PCS	15.6/14.0KGS
Rated Input Power	2600W		2PCS/CTN
Spindle Thread	M14	Rated Frequency	60/50Hz
No-load Speed	8500r/6200r/min	Rated Voltage	110V/240V
Machine Weight	6.30Kg		
	62.5*43.5*20cm		



541807
542307

S1M-KY7-180/230



180mm/230mm ANGLE GRINDER

Max Disc Dia	φ180/230mm	PCS/CTN	2PCS/CTN
Rated Input Power	2600W		
Spindle Thread	M14	Rated Frequency	60/50Hz
No-load Speed	8500r/6600r/min	Rated Voltage	110V/240V
Machine Weight	5.8Kg		



541216

S1M-KY16-125



125mm BRUSHLESS ANGLE GRINDER

Max Disc Dia	φ125mm	Rated Frequency	60/50Hz
Rated Input Power	1300W	Rated Voltage	110V/240V
Spindle Thread	M14		
No-load Speed	10000r/min		



701002

S1J-KY2-10



120W DIE GRINDER

Max Outer Dia	φ10X16mm	G.W./N.W./PCS	13/8KGS
Rated Input Power	120W		8PCS/CTN
No-load Speed	0-30000r/min	Rated Frequency	60/50Hz
Machine Weight	1.0Kg	Rated Voltage	110V/240V
	62*34.5*25.5cm		



701006

S1J-KY6-10



180W DIE GRINDER

Max Outer Dia	φ10X16mm	G.W./N.W./PCS	14.6/13.0KGS
Rated Input Power	180W		8PCS/CTN
No-load Speed	10000-30000r/min	Rated Frequency	60/50Hz
Machine Weight	0.6Kg	Rated Voltage	110V/240V
	62*34.5*25.5cm		



702503

S1J-KY3-25



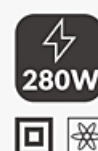
190W DIE GRINDER

Max Outer Dia	φ25*32mm	G.W./N.W./PCS	19.5/15.7KGS
Rated Input Power	190W		15PCS/CTN
No-load Speed	22000r/min	Rated Frequency	60/50Hz
Machine Weight	1.0Kg	Rated Voltage	110V/240V
	38.5*32*39cm		



702510

S1J-KY10-25



280W DIE GRINDER

Max Outer Dia	φ25*32mm	Rated Frequency	60/50Hz
Rated Input Power	280W	Rated Voltage	110V/240V
No-load Speed	10000-24000r/min		
Machine Weight	1.1Kg		



702512
S1J-KY12-25

500W DIE GRINDER

Max outer Dia	φ25*32mm	G.W./N.W./PCS	23.3/18.5KGS
Rated Input Power	500W		10PCS/CTN
No-Load Speed	27000r/min	Rated Frequency	60/50Hz
Machine Weight	1.7Kg	Rated Voltage	110V/240V
	70.5*44*25.5cm		



702513
S1J-KY13-25

500W DIE GRINDER

Max outer Dia	φ25*32mm	G.W./N.W./PCS	30.0/24.0KGS
Rated Input Power	500W		15PCS/CTN
No-Load Speed	27000r/min	Rated Frequency	60/50Hz
Machine Weight	1.35Kg	Rated Voltage	110V/240V
	42.5*33*38cm		



702515
S1J-KY15-25

500W DIE GRINDER

Max outer Dia	φ25*32mm	G.W./N.W./PCS	30.0/24.0KGS
Rated Input Power	500W		15PCS/CTN
No-Load Speed	27000r/min	Rated Frequency	60/50Hz
Machine Weight	1.35Kg	Rated Voltage	110V/240V
	42.5*33*38cm		



702504
S1J-KY4-25

350W DIE GRINDER

Max outer Dia	φ25*32mm	G.W./N.W./PCS	23.3/18.5KGS
Rated Input Power	350W		10PCS/CTN
No-Load Speed	22000r/min	Rated Frequency	60/50Hz
Machine Weight	1.7Kg	Rated Voltage	110V/240V
	53*41*20cm		



702506
S1J-KY6-25

500W DIE GRINDER

Max outer Dia	φ25*32mm	G.W./N.W./PCS	23.3/18.5KGS
Rated Input Power	500W		10PCS/CTN
No-Load Speed	24000r/min	Rated Frequency	60/50Hz
Machine Weight	1.65Kg	Rated Voltage	110V/240V
	70.5*43.5*21cm		



702511
S1J-KY11-25

800W DIE GRINDER

Max outer Dia	φ25*32mm	G.W./N.W./PCS	23.3/18.5KGS
Rated Input Power	800W		10PCS/CTN
No-Load Speed	8800r/min	Rated Frequency	60/50Hz
Machine Weight	1.65Kg	Rated Voltage	110V/240V
	70.5*43.5*21cm		



701201
S1S-KY-125

1300W STRAIGHT SANDER

Max Disc Dia	φ125*20mm	G.W./N.W./PCS	20.0/16.5KGS
Rated Input Power	1300W		10PCS/CTN
No-Load Speed	5000r/min	Rated Frequency	60/50Hz
Machine Weight	3.3Kg	Rated Voltage	110V/240V
	63.5*32.5*24.5cm		



701808
S1P-KY8-180

1300W ANGLE POLISHER

Pad Size	φ180mm	G.W./N.W./PCS	18.2/14.8KGS
Rated Input Power	1300W		4PCS/CTN
No-Load Speed	600-3500r/min	Rated Frequency	60/50Hz
Machine Weight	3.9Kg	Rated Voltage	110V/240V
	57*38.5*23.5cm		



701804
S1P-KY4-180

1050W ANGLE POLISHER

Pad Size	φ180mm	G.W./N.W./PCS	25.0/14.0KGS
Rated Input Power	1050W		5PCS/CTN
No-Load Speed	650-2100r/min	Rated Frequency	60/50Hz
Machine Weight	2.95Kg	Rated Voltage	110V/240V
	50.5*34*27.5cm		



DUST-FREE WALL POLISHING



501820
S1A-KY-180

800W DRYWALL SANDER

Rated Input Power	800W	Rated Frequency	60/50Hz
No-Load Speed	1200-2200r/min	Rated Voltage	110V/240V
Max Disc Dia	φ180mm		
PCS/CTN	4PCS/CTN		



502201
S1A-KY-225

850W DRYWALL SANDER

Rated Input Power	850W	Rated Frequency	60/50Hz
No-Load Speed	800-1700r/min	Rated Voltage	110V/240V
Max Disc Dia	φ225mm		
PCS/CTN	1PC/CTN		



502302 PRODUCT DETAILS



**HEAVY
DUTY**



**CYLINDRICAL
STRUCTURE DESIGN**

- 1 HIGH-POWER MOTOR**
430W high power motor, more efficient grinding
- 2 LENGTHENED CARBON BRUSH DESIGN**
Single carbon brush service life more than 300 hours
- 3 DOUBLE WIND BLADE DESIGN**
Larger airflow, faster heat dissipation&cooling, fast dust extraction
- 4 HIGH-STRENGTH ELASTIC BRACKET**
Test for more than 750 hours without breaking or bending
- 5 DUST-PROOF SWITCH DESIGN**
Longer switch life without dust interference
- 6 DUST COLLECTION DESIGN**
Dust reduction rate is more than 90% to ensure users a clean operating environment
- 7 SOFT LEATHER WRAP AROUND THE GRIP**
Comfortable grip, fit to the palm, long time work without numbness
- 8 LOW CENTER OF GRAVITY DESIGN**
Weak vibration and no numbness
- 9 CYLINDRICAL STRUCTURE DESIGN**
No deformation after long-term use

SELLING POINT DIAGRAM



**MORE THAN
750 HOURS
LIFE**

**HIGH-STRENGTH
ELASTIC BRACKET**
Test for more than 750 hours
without breaking or bending



HEAVY DUTY PLUNGE ROUTER



561203
M1R-KY3-12

1600W PLUNGE ROUTER

Chuck Dia	φ12mm	G.W./N.W./PCS	17.8/16.0KGS
Plug Running	0-65mm		4PCS/CTN
Rated Input Power	1600W	Rated Frequency	60/50Hz
No-Load Speed	9000-23000r/min	Rated Voltage	110V/240V
Machine Weight	5.35Kg		
	47.5*34*30.5cm		



561204
M1R-KY4-12

1500W PLUNGE ROUTER

Chuck Dia	φ12mm	G.W./N.W./PCS	28.5/25.0KGS
Plug Running	0-65mm		4PCS/CTN
Rated Input Power	1500W	Rated Frequency	60/50Hz
No-Load Speed	22000r/min	Rated Voltage	110V/240V
Machine Weight	5.38Kg		
	56*45*31cm		



568204S
M1B-KY4-82x1

82mm ELECTRIC PLANER

Width of Cutter	82mm	G.W./N.W./PCS	17.8/16.0KGS
Cut-Depth	1mm		4PCS/CTN
Rated Input Power	710W	Rated Frequency	60/50Hz
Speed	15000r/min	Rated Voltage	110V/240V
Machine Weight	3.46Kg		
	38*34.5*39.5cm		



568208
M1B-KY8-82x2

82mm ELECTRIC PLANER

Width of Cutter	82mm	G.W./N.W./PCS	17.8/16.0KGS
Cut-Depth	2mm		4PCS/CTN
Rated Input Power	710W	Rated Frequency	60/50Hz
Speed	17000r/min	Rated Voltage	110V/240V
Machine Weight	3.4Kg		
	38*34.5*39.5cm		



569003
M1B-KY3-90x2

90mm ELECTRIC PLANER

Width of Cutter	90mm	G.W./N.W./PCS	17.0/14.0KGS
Cut-Depth	2mm		3PCS/CTN
Rated Input Power	1050W	Rated Frequency	60/50Hz
Speed	15000r/min	Rated Voltage	110V/240V
Machine Weight	4.3Kg		



560602
M1P-KY2-6

500W ELECTRIC TRIMMER

Collet Chuck Dia	φ6mm	G.W./N.W./PCS	18.5/17.0KGS
			8PCS/CTN
Rated Input Power	500W	Rated Frequency	60/50Hz
No-Load Speed	30000r/min	Rated Voltage	110V/240V
Machine Weight	1.5Kg		
	66.5*30*23.5cm		



560603
M1P-KY3-6

500W ELECTRIC TRIMMER

Collet Chuck Dia	φ6mm	G.W./N.W./PCS	19.8/18.0KGS
			8PCS/CTN
Rated Input Power	500W	Rated Frequency	60/50Hz
No-Load Speed	30000r/min	Rated Voltage	110V/240V
Machine Weight	1.6Kg		
	66.5*30*23.5cm		



560801
M1P-KY-8

900W ELECTRIC TRIMMER

Collet Chuck Dia	φ6mm	Rated Frequency	60/50Hz
	φ8mm	Rated Voltage	110V/240V
Rated Input Power	900W		
No-Load Speed	10000-30000r/min		



501101
S1B-KY-110x100

180W FINISHING SANDER

Pad Size	110X100mm	G.W./N.W./PCS	14.5/12.0KGS
Rated Input Power	180W		8PCS/CTN
Orbital	12000/min	Rated Frequency	60/50Hz
Machine Weight	1.3Kg	Rated Voltage	110V/240V
	36.5*30.5*36cm		



501107
S1B-KY7-110x100

260W FINISHING SANDER

Pad Size	110X100mm	G.W./N.W./PCS	15.8/13KGS
Rated Input Power	260W		12PCS/CTN
No-Load Speed	14500/min	Rated Frequency	60/50Hz
Machine Weight	1.1Kg	Rated Voltage	110V/240V
	37.5*36.5*30cm		



509306
S1B-KY6-93x185

320W FINISHING SANDER

Pad Size	93X185mm	G.W./N.W./PCS	17.3/15.0KGS
Rated Input Power	13500/min		10PCS/CTN
No-Load Speed	320W	Rated Frequency	60/50Hz
Machine Weight	1.85Kg	Rated Voltage	110V/240V
	52.5*30.5*34.5cm		



502302
S1B-KY2-115x226

430W FINISHING SANDER

Pad Size	115X226mm	PCS/CTN	6PCS/CTN
Rated Input Power	12500/min		
No-Load Speed	430W	Rated Frequency	60/50Hz
Machine Weight	2.9Kg	Rated Voltage	110V/240V



HEAVY DUTY JIG SAW

CHARACTERISTICS

- New generation model with higher power and better image
- Laser guide provide accurate cutting work
- Variable speed for controlled cutting of various materials
- Aluminum gear housing for higher strength and durability
- 4 position orbital setting for improved cutting efficiency
- Adjustable aluminum base for bevel cutting up to 45° left or right



566504
M1Q-KY4-65

600W

LASER

65mm JIG SAW

Cutting Capacity	Steel 6mm Wood 65mm	G.W./N.W./PCS	22.0/21.0KGS 5PCS/CTN
Rated Input Power	600W	Rated Frequency	60/50Hz
No-Load Speed	0-3000/min	Rated Voltage	110V/240V
Machine Weight	2.5Kg		
	47.5*40*32cm		



706101
S1T-KY-100x610

1200W

1200W BELT SANDER

Sanding Belt Size	110X610mm	G.W./N.W./PCS	16.0/11.5KGS
Rated Input Power	500m/min		2PCS/CTN
No-Load Speed	1200W	Rated Frequency	60/50Hz
Machine Weight	5.85Kg	Rated Voltage	110V/240V
	41.5*40*31cm		



772803
Q1F-KY3-2.8

600W

772804
Q1F-KY4-2.8

600W ELECTRIC BLOWER

Wind Volume	2.8m ³ /min	G.W./N.W./PCS	13.5/10.0KGS
Rated Input Power	600W		6PCS/CTN
No-Load Speed	7000-16000r/16000r/min	Rated Frequency	60/50Hz
Machine Weight	1.55Kg	Rated Voltage	110V/240V
	54.5*26*37.5cm		



566502
M1Q-KY2-65

550W

65mm JIG SAW

Cutting Capacity:	Steel 6mm Wood 65mm	G.W./N.W./PCS	20.0/13.0KGS 5PCS/CTN
Rated Input Power	550W	Rated Frequency	60/50Hz
No-Load Speed	500-3000/min	Rated Voltage	110V/240V
Machine Weight	2.4Kg		
	53.5*39*30cm		



761220
M1Y-KY20-125

1300W

125mm CIRCULAR SAW

Blade Dia	φ125mm	G.W./N.W./PCS	21.0/14.4KGS
Max Cutting Capacity	39mm at 90° 19.5mm at 45°	Rated Frequency	60/50Hz
Rated Input Power	1300W	Rated Voltage	110V/240V
No-Load Speed	7000r/min		
Machine Weight	3.6Kg		
	48*34.5*41cm		



761816
M1Y-KY16-180

1300W

185mm CIRCULAR SAW

Blade Dia	φ185mm	G.W./N.W./PCS	21.8/20.0KGS
Max Cutting Capacity	60mm at 90° 44mm at 45°	Rated Frequency	60/50Hz
Rated Input Power	1300W	Rated Voltage	110V/240V
No-Load Speed	5500r/min		
Machine Weight	4.25Kg		
	48*34.5*41cm		



761820
M1Y-KY20-180

1300W

185mm CIRCULAR SAW

Blade Dia	φ185mm	G.W./N.W./PCS	21.8/20.0KGS
Max Cutting Capacity	60mm at 90° 44mm at 45°	Rated Frequency	60/50Hz
Rated Input Power	1300W	Rated Voltage	110V/240V
No-Load Speed	5000r/min		
Machine Weight	4.25Kg		
	48*34.5*41cm		



762310
J1Z-KY10-235

HEAVY DUTY

2300W

235mm CIRCULAR SAW

Blade Dia	φ235mm	G.W./N.W./PCS	16.1/13.6KGS
Max Cutting Capacity	85mm at 90° 60mm at 45°	Rated Frequency	60/50Hz
Rated Input Power	2300W	Rated Voltage	110V/240V
No-Load Speed	3500r/min		
Machine Weight	6.35Kg		
	57.5*40.5*25cm		



761806
M1Y-KY6-180

HEAVY DUTY

1800W

185mm CIRCULAR SAW

Blade Dia	φ185mm	G.W./N.W./PCS	16.0/14.0KGS
Max Cutting Capacity	60mm at 90° 44mm at 45°	Rated Frequency	60/50Hz
Rated Input Power	1800W	Rated Voltage	110V/240V
No-Load Speed	4500r/min		
Machine Weight	4.25Kg		
	54.5*34.5*23.5cm		



GREEN LIGHT IS VISIBLE IN SUNSHINE

CHARACTERISTICS

- Professional light processing chip to ensure light source stability
- 360° fine adjustment to make sure people work more easy
- Auto level and tilt alarm function
- High intensity light for indoor and outdoor use



575101

LINE LASER

Laser Diode	635mm	Machine Weight	0.86Kg
Leveling Type	Self-leveling		52.5*22.5*49cm
Mount Thread	M12	G.W./N.W./PCS	10.7/4.0KGS
Rang	20m	Rated Voltage	4PCS/CTN
Power Source	#5Battery		



575103

LINE LASER

Laser Diode	635mm	Machine Weight	0.86Kg
Leveling Type	Self-leveling		52.5*22.5*49cm
Mount Thread	M12	G.W./N.W./PCS	10.7/4.0KGS
Rang	20m	Rated Voltage	4PCS/CTN
Power Source	#5Battery		



573102

LINE LASER

Laser Diode	635mm	Machine Weight	0.86Kg
Leveling Type	Self-leveling		52.5*22.5*49cm
Mount Thread	M12	G.W./N.W./PCS	10.7/4.0KGS
Rang	20m	Rated Voltage	4PCS/CTN
Power Source	#5Battery		



MMA-140A

140A WELDING MACHINE

Technique	IGBT	Insulation Class	B
Rated Input Voltage	220V±15%	Protection Class	IP23
Rated Input Frequency	50/60Hz	PCS/CTN	4
No-Load Voltage	80V	Electrode	1.6-3.2mm
Duty Cycle	0.6	G.W./N.W./PCS	24/20KGS
Rated Output Current	30-140A	Measurement	91×55×36cm



MMA-250AS

250A WELDING MACHINE

Technique	IGBT	Insulation Class	B
Rated Input Voltage	220V±15%	Protection Class	IP23
Rated Input Frequency	50/60Hz	PCS/CTN	1
No-Load Voltage	80V	Electrode	1.6-3.2mm
Duty Cycle	0.6	G.W./N.W./PCS	8/7KGS
Rated Output Current	30-250A	Measurement	45×27×35cm



MMA-315AS

315A WELDING MACHINE

Technique	IGBT	Insulation Class	B
Rated Input Voltage	220V±15%	Protection Class	IP23
Rated Input Frequency	50/60Hz	PCS/CTN	1
No-Load Voltage	80V	Electrode	1.6-4.0mm
Duty Cycle	0.6	G.W./N.W./PCS	12.5/10KGS
Rated Output Current	30-315A	Measurement	63×33×44cm



MMA-400A

400A WELDING MACHINE

Technique	IGBT	Insulation Class	B
Rated Input Voltage	380V±15%	Protection Class	IP23
Rated Input Frequency	50/60Hz	PCS/CTN	1
No-Load Voltage	70V	Electrode	1.6-4.0mm
Duty Cycle	0.6	G.W./N.W./PCS	13/11KGS
Rated Output Current	40-400A	Measurement	62×33×44cm



MMA-400AS

400A WELDING MACHINE

Technique	IGBT	Insulation Class	B
Rated Input Voltage	380V±15%	Protection Class	IP23
Rated Input Frequency	50/60Hz	PCS/CTN	1
No-Load Voltage	75V	Electrode	1.6-4.0mm
Duty Cycle	0.6	G.W./N.W./PCS	13/11KGS
Rated Output Current	40-400A	Measurement	59×32×43cm





572502
J1J-KY2-2.5



500W

500W ELECTRIC SHEAR

Max Cutting Capacity	2.5mm	G.W./N.W./PCS	22.3/19.5KGS
Rated Input Power	500W		8PCS/CTN
No-load Speed	2600/min	Rated Frequency	60/50Hz
Machine Weight	2.25Kg	Rated Voltage	110V/240V
	36.5*33.5*37		

572503
J1J-KY3-2.5



500W

500W ELECTRIC SHEAR

Max Cutting Capacity	2.5mm	G.W./N.W./PCS	22.3/19.5KGS
Rated Input Power	500W		8PCS/CTN
No-load Speed	2600/min	Rated Frequency	60/50Hz
Machine Weight	2.25Kg	Rated Voltage	110V/240V
	36.5*33.5*37		

564006
M1L-KY6-405



2000W

2000W CHAIN SAW

POWER	2000W	G.W./N.W./PCS	27/19KGS
No-Load SPEED	480m/min		4PCS/CTN
GUIDE PLATE LENGTH	405mm	Rated Frequency	60/50Hz
Machine Weight	5.45Kg	Rated Voltage	110V/240V
	54*45*45cm		

573902



2000W

1700W HIGH PRESSUER WASHER

Rated Input Power	1700W	G.W./N.W.	25.5/19KGS
Water Flow Rate	390L/h	Measurement	41.5x40x38.5cm
Work Pressure	80Bar	Rated Frequency	60/50Hz
PCS/CTN	2PCS/CTN	Rated Voltage	110V/240V

HEAVY DUTY

552504
J1X-KY4-255



1900W

255mm MITER SAW

Blade Dia	255mm	No-load Speed	5000r/min
Max Cutting Capacity	90° 92x95mm	Machine Weight	14.7Kg
	70x130mm		56*48*40.5cm
	45° 53x95mm	G.W./N.W./PCS	17.5/14.1KGS
	27x130mm		1PC/CTN
Mild Stand Angle	0-45°	Rated Frequency	60/50Hz
Rated Input Power	1900W	Rated Voltage	110V/240V

552508
J1X-KY8-255



2000W

255mm MITER SAW

Blade Dia	255mm	G.W./N.W./PCS	17.0/11.9KGS
Max Cutting Capacity	90mm		1PC/CTN
Rated Input Power	2000W	Rated Frequency	60/50Hz
No-load Speed	4600r/min	Rated Voltage	110V/240V
Machine Weight	11.55Kg		
	57*45*43.5cm		

552506
J1X-KY6-255



1900W

255mm MITER SAW

Blade Dia	255mm	Machine Weight	15.75Kg
Max Cutting Capacity	90° 88x290mm		79.5*52.5*47.5cm
	45° 33x290mm	G.W./N.W./PCS	20.0/14.7KGS
Mild Stand Angle	0-45°		1PC/CTN
Rated Input Power	1900W	Rated Frequency	60/50Hz
No-load Speed	5000r/min	Rated Voltage	110V/240V



HEAVY DUTY CUT-OFF MACHINE

553503
J1G-KY3-355



HEAVY DUTY
2200W

355mm CUT-OFF MACHINE

Blade Dia	355mm	Machine Weight	16Kg
Max Cutting Capacity	100mm		55*33.5*42.5cm
Mild Stand Angle	0-45°	G.W./N.W./PCS	18.2/16.8KGS
Rated Input Power	2200W		1PC/CTN
No-load Speed	3800r/min	Rated Frequency	60/50Hz
		Rated Voltage	110V/240V

553505
J1G-KY5-355



2200W

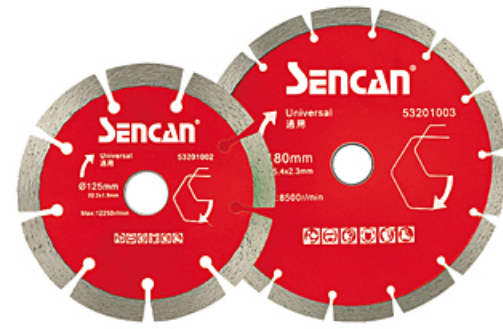
355mm CUT-OFF MACHINE

Blade Dia	355mm	G.W./N.W./PCS	18.0/15.9KGS
Max Cutting Capacity	100mm		1PC/CTN
Mild Stand Angle	0-45°	Rated Frequency	60/50Hz
Rated Input Power	2200W	Rated Voltage	110V/240V
No-load Speed	3800r/min		
Machine Weight	15.7Kg		55*34.5*43cm



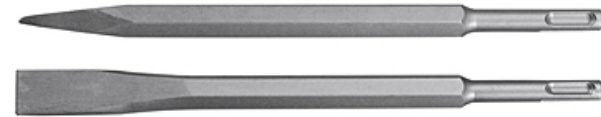
TCT SAW BLADE

SPECIFICATION(mm)	TEETH TYPE	PCS/CTN	REMARK
110(4")x1.8x1.2x24T Φ20	ABT	100	WOOD
110(4")x1.8x1.2x30T Φ20	ABT	100	WOOD
110(4")x1.8x1.2x40T Φ20	ABT	100	WOOD
110(4")x1.8x1.2x40T Φ20	FT	100	ALUMINUM
115(4.5")x1.8x1.2x40T Φ20	ABT	100	WOOD
125(5")x1.7x1.1x30TX20	ABT	100	WOOD
150(6")x2.2x1.5x30TX20	ABT	50	WOOD
150(6")x2.2x1.5x40T Φ20	ABT	50	WOOD
150(6")x2.2x1.5x60T Φ20	ABT	50	WOOD
180(7")x2.2x1.5x24T Φ25.4	ABT	50	WOOD
180(7")x2.2x1.5x30T Φ25.4	ABT	50	WOOD
180(7")x2.2x1.5x40T Φ25.4	ABT	50	WOOD
180(7")x2.2x1.5x60T Φ25.4	ABT	50	WOOD
180(7")x2.2x1.5x80T Φ25.4	FT	50	ALUMINUM
200(8")x2.2x1.5x30T Φ25.4	ABT	50	WOOD
200(8")x2.2x1.5x40T Φ25.4	ABT	50	WOOD
200(8")x2.2x1.5x60T Φ25.4	ABT	50	WOOD
200(8")x2.2x1.5x80T Φ25.4	ABT	50	WOOD
200(8")x2.2x1.5x100T Φ25.4	FT	50	ALUMINUM
230(9")x2.6x1.8x24T Φ25.4	ABT	40	WOOD
230(9")x2.6x1.8x30T Φ25.4	ABT	40	WOOD
230(9")x2.6x1.8x40T Φ25.4	ABT	40	WOOD
230(9")x2.6x1.8x60T Φ25.4	ABT	40	WOOD
230(9")x2.6x1.8x80T Φ25.4	ABT	40	WOOD
230(9")x2.6x1.8x80T Φ25.4	FT	40	ALUMINUM
230(9")x2.6x1.8x100T Φ25.4	FT	40	ALUMINUM
250(10")x2.8x1.8x24T Φ25.4	ABT	25	WOOD
250(10")x2.8x1.8x30T Φ25.4	ABT	25	WOOD
250(10")x2.8x1.8x40T Φ25.4	ABT	25	WOOD
250(10")x2.8x1.8x60T Φ25.4	ABT	25	WOOD
250(10")x2.8x1.8x80T Φ25.4	ABT	25	WOOD
250(10")x3.0x2.0x100T Φ25.4	ABT	25	WOOD
250(10")x3.0x2.0x120T Φ25.4	ABT	25	WOOD
254(10")x3.2x2.2x120T Φ25.4	ABT	25	WOOD
250(10")x2.8x1.8x100T Φ25.4	FT	25	ALUMINUM
250(10")x2.8x1.8x120T Φ25.4	FT	25	ALUMINUM
300(12")x3.2x2.2x24T Φ30	ABT	20	WOOD
300(12")x3.2x2.2x30T Φ30	ABT	20	WOOD
300(12")x3.2x2.2x40T Φ30	ABT	20	WOOD
300(12")x3.2x2.2x60T Φ30	ABT	20	WOOD
300(12")x3.2x2.2x80T Φ30	ABT	20	WOOD
300(12")x3.2x2.2x100T Φ30	ABT	20	WOOD
300(12")x3.2x2.2x120T Φ30	ABT	20	WOOD
300(12")x3.2x2.2x100T Φ30	FT	20	ALUMINUM
300(12")x3.2x2.2x120T Φ30	FT	20	ALUMINUM
350(14")x3.2x2.4x60T Φ25.4	ABT	15	WOOD
350(14")x3.2x2.4x80T Φ25.4	ABT	15	WOOD
350(14")x3.2x2.4x120T Φ25.4	ABT	15	WOOD
350(14")x3.2x2.4x120T Φ25.4	FT	15	ALUMINUM
400(16")x3.2x2.4x120T Φ30	FT	10	ALUMINUM



DIAMOND SAW BLADE

SPECIFICATION(mm)	PQ.PCS	REMARK
Φ110x20x1.8mm	1	ALL-PURPOSE
Φ115x22.2x2.0mm	1	ALL-PURPOSE
Φ125x22.2x2.0mm	1	ALL-PURPOSE
Φ150x22.2x2.2mm	1	ALL-PURPOSE
Φ180x22.2x2.4mm	1	ALL-PURPOSE
Φ230x22.2x2.6mm	1	ALL-PURPOSE
Φ250x25.4x2.7mm	1	ALL-PURPOSE
Φ300x25.4x3.0mm	1	ALL-PURPOSE
Φ350x25.4x3.2mm	1	ALL-PURPOSE
Φ400x25.4x3.4mm	1	ALL-PURPOSE
Φ450x25.4x3.6mm	1	ALL-PURPOSE
Φ500x25.4x4.0mm	1	ALL-PURPOSE



CHISEL

SPECIFICATION(mm)	PQ.PCS	REMARK
14x250	1	SDS PLUS POINT CHISEL
14x250x20	1	SDS PLUS FLAT CHISEL
18x280	1	SDS MAX POINT CHISEL
18x280x25	1	SDS MAX FLAT CHISEL



CHISEL

SPECIFICATION(mm)	PQ.PCS	REMARK
17x280	1	HEX POINT CHISEL
17x280x25	1	HEX FLAT CHISEL
17x400	1	HEX POINT CHISEL
17x400x25	1	HEX FLAT CHISEL



CHISEL

SPECIFICATION(mm)	PQ.PCS	REMARK
30x410	1	PH65 POINT CHISEL
30x410x35	1	PH65 FLAT CHISEL



TWIST DRILL BIT

SPECIFICATION(mm)	PQ.PCS	REMARK
1.0	1	12
1.5	1	18
2.0	1	24
2.5	1	30
3.0	1	33
3.2	1	36
3.3	1	36
3.5	1	39
4.0	1	43
4.1	1	43
4.2	1	43
4.5	1	47
4.8	1	52
5.0	1	52
5.1	1	52
5.2	1	52
5.5	1	57
6.0	1	57
6.5	1	63
6.8	1	69
7.0	1	69
7.5	1	69
8.0	1	75
8.5	1	75
9.0	1	81
9.5	1	81
10.0	1	87
10.2	1	87
10.5	1	87
11.0	1	94
11.5	1	94
12.0	1	101
12.5	1	101
13.0	1	101



MASONRY DRILL BIT

SPECIFICATION(mm)	PQ.PCS
4x75	10
5x85	10
6x100	10
8x120	10
10x120	10



SDS PULS HAMMER DRILL BIT

SPECIFICATION(mm)	PQ.PCS
6x110	10
6x160	10
6x210	10
6x110	10
8x110	10
8x160	10
8x260	10
10x110	10
10x160	10
10x210	10
10x260	10
12x110	10
12x160	10
12x210	10
12x260	10

ICON INDEX

LITHIUM BATTERY	DRILL FUNCTION	ADJUSTABLE SPEED	SUITCASE	SPINDLE LOCK	POSITIVE NEGATIVE
SDS-PLUS	SDS-HEX	HAMMER FUNCTION	CHISEL FUNCTION	DOUBLE INSULATION	
LASER	CE CERTIFICATION	CCC CERTIFICATION	ROHS CERTIFICATION		
EMC CERTIFICATION	GS CERTIFICATION	GS CERTIFICATION	ZHEJIANG QUALITY CERTIFICATION		